

78 WHITFIELD STREET

Availability: Part first floor – 1,700 sq ft

Located in the heart of Fitzrovia, the first floor of this thoughtfully recrafted building offers bright, contemporary media style space benefitting from a communal terrace.

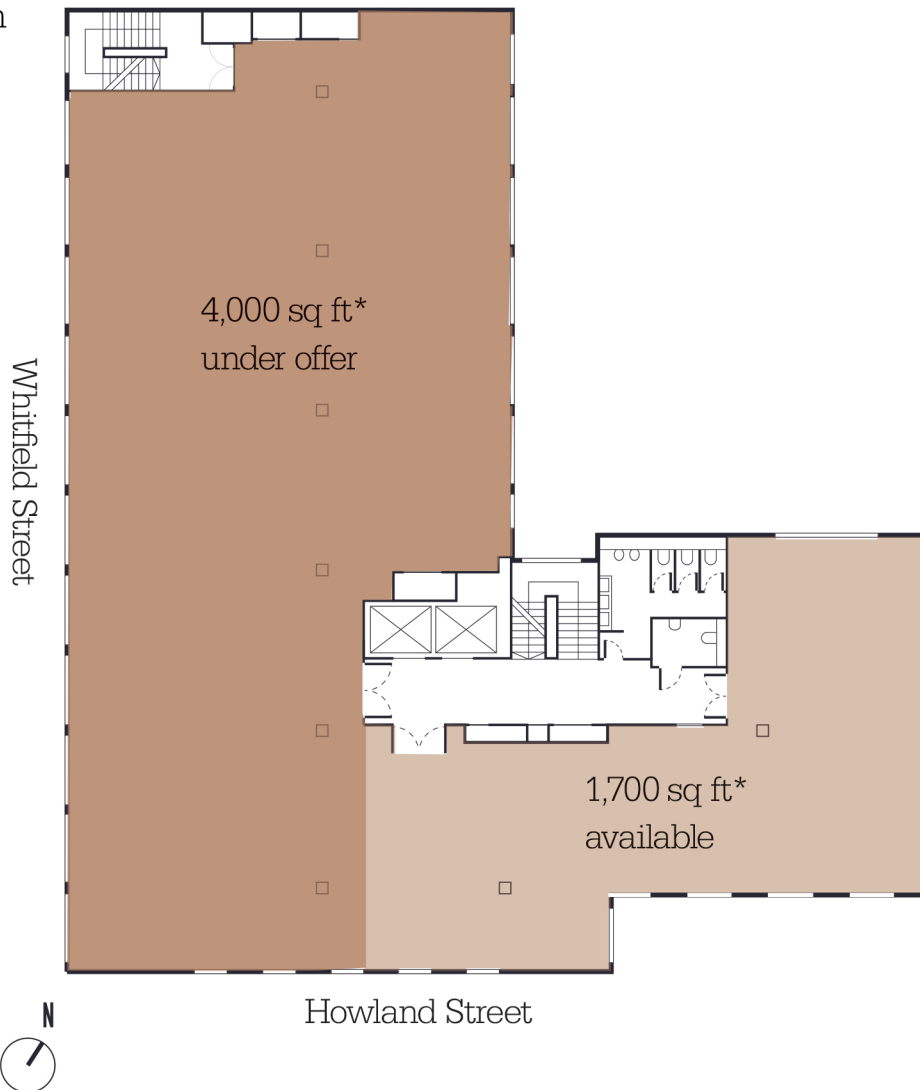


- New portal entrance and glass doors
- Newly designed staffed reception area with bespoke reception desk, new LED light fittings and feature wall finishes
- Refurbished staircase, with new finishes to the lift cars and lift lobbies
- New WCs and showers (x3)
- Overhauled exposed two-pipe fan coil air conditioning
- 3.0m floor to soffit height
- Contemporary office space featuring new LED light installations and openable windows
- Raised access floors carpeted throughout
- Communal building terrace on 6th floor
- 20 car parking spaces
- 74 cycle storage bays
- WiredScore Certification: Wired Certified Gold



Reception

Floor plan



*Final measured survey on completion of split works



AGENTS

ASHWELL ROGERS

Ash Sharma
ash@ashwellrogers.com
020 7758 3285

Richard Williams
richardwilliams@ashwellrogers.com
020 7758 3289

KNIGHT FRANK

Ian McCarter
ian.mccarter@knightfrank.com
020 7861 1506

William Foster
william.foster@knightfrank.com
020 7861 1191

Oliver Watkins
oliver.watkins@knightfrank.com
020 7861 1547

Energy Performance Certificate: Rating E

78whitfieldstreet.co.uk

DERWENT
LONDON